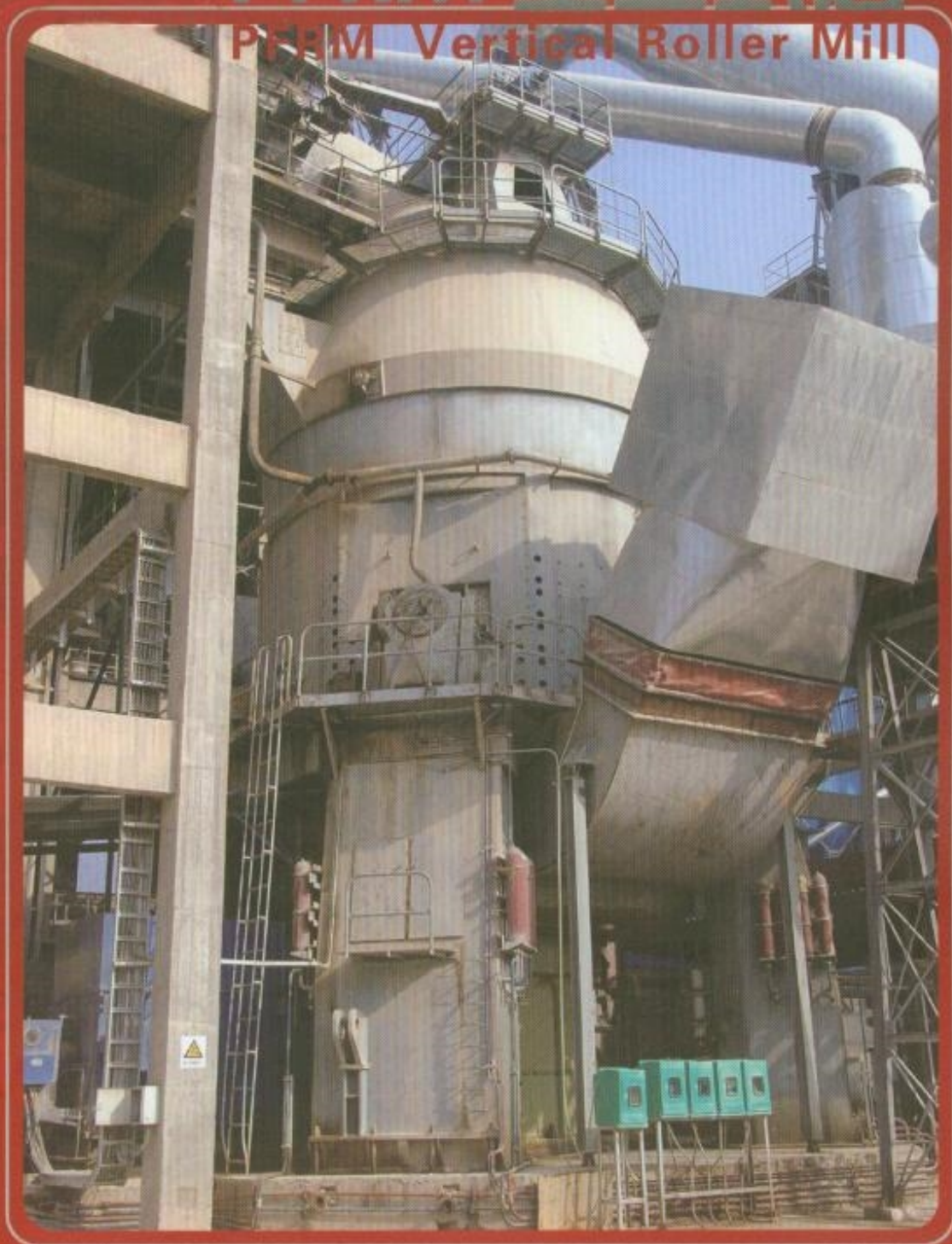


服务领域：水泥 / 矿山 / 有色冶金 / 煤炭 / 化工
SCOPE OF SERVICE: CEMENT, MINE, METALLURGY, COAL AND CHEMICAL INDUSTRY

PFRM 型立式磨

PFRM Vertical Roller Mill



江苏鹏飞集团
JIANGSU PENGFEI GROUP

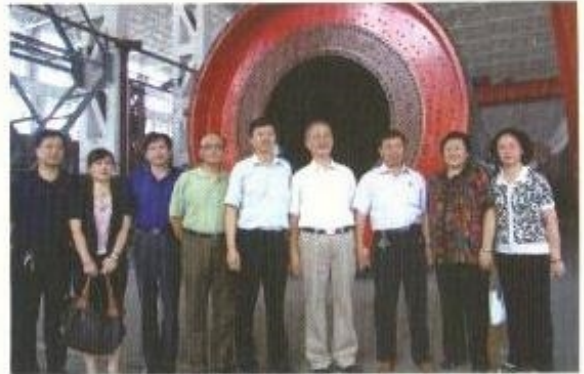
江苏鹏飞集团股份有限公司
JIANGSU PENGFEI GROUP CO.,LTD.

公司简介 Company Introduction

区位优势 The advantage of the position

鹏飞集团拥有重要的区位优势，是中国沿海地区最大的大型回转装备生产出口基地。在南通港区建成超大件组装生产基地，鹏飞集团地处苏中交通枢纽重镇海安，沿海、江海高速，宁启、新长铁路、328、204 国道交汇于此。公司距国际大都市上海 2 小时行程，六朝古都南京 3 小时行程。首批沿海开放城市南通半小时行程。长江入海口的国际大港南通港、上海港为公司大型装备出口提供了得天独厚的优势。

Pengfei Group has the important location advantage, and it is the largest production & export base of large size rotary equipment in China's coastal area. The advantage of the position: Jiangsu Pengfei Group Co., Ltd. locates the main transportation county in the middle of Jiangsu province—Hai'an County. The coasting highway, the river highway, Ningqi Railway, Xinchang Railway and No.328 204 National highway all pass from here. It takes two hours from the company to the international cosmopolis Shanghai City, takes three hours from the company to six dynasties ancient capital Nanjing City and takes half an hour from the company to the first opening city Nantong City. The international Nantong Port and Shanghai Port which locates in the Yangtse River Estuary make the large-sized equipment export from our company very convenient.



总裁王家宾(右三)陪同时任中国建筑材料联合会会长张人为(右四)一行考察鹏飞新区

Mr. Wang Jiebin (third from right), Board of Chairman & General Manager of Jiangsu Pengfei Group Co., Ltd. accompanied Mr. Zhang Xinyu (fourth from right), the president of China Building Material Council to visit the new plant of Pengfei Group.

经营范围 Scope of business

1、为日产万吨级以下新型干法回转窑水泥生产企业实施工艺设计、设备成套、安装调试、达产达标工程总承包。

1、It has the great comprehensive ability to provide best quality services on turn-key basis with technology design, complete plant, erection and debugging, commissioning for the new type dry process rotary kiln cement production enterprise under the daily capacity of 10000t.

2、为冶金、化工、电力、矿山、煤炭、石油、环保等企业提供粉磨、煅烧、提油、破碎、收尘、输送提升成套装备及技术服务。

2、It supplies complete equipments and technical services of grinding, calcination, oil extraction, crushing, dust collecting, conveying and lifting for the metallurgy, the chemical industry, the electrical power, the mine, the coal, the oil, the environmental protection enterprises, etc.

产品覆盖 The products covering

水泥机械产业规模总量位同行业第二位，江苏省第一位，产品畅销全国并出口德国、俄罗斯、日本、韩国、巴西、埃及、伊朗、孟加拉、巴基斯坦、土耳其、缅甸、越南、哥伦比亚、玻利维亚、南非等六十多个国家和地区。

The total amount in the cement machinery industry is second rank among the same business and the top rank in Jiangsu. The products have been sold well all over the country and exported to more than 60 countries and areas such as Germany, Russia, Japan, Korea, Brazil, Egypt, Iran, Bangladesh, Pakistan, Turkey, Myanmar, Vietnam, Columbia, Bolivia, South America, etc.

集团概况 General introduction of the company

集团分设机械、电子、铸造、安装、新型建材等 6 家子公司，占地面积达 350000 平方米，总资产达 8.2 亿元，员工 1500 人，工程技术人员 450 人，年加工制造能力达 30 万吨。具有年加工制造 300 台套辊压机、260 台套预粉立磨、400 台大型球磨机、150 台大型回转窑(炉)综合实力。

The company has the six subsidiary companies such as the mechanical plant, electronic plant, casting plant, installation plant, the new type construction materials plant, etc. It covers an area of 350,000m², and has 0.82 billion RMB of total assets. There are 1500 personnels and 450 engineers and technicians, The annual manufacturing capacity reaches 300,000t. Pengfei has already reached the capacity to manufacture 400 sets of large ball mills, 300sets of roller press, 260 sets of pre-grinding equipments and 150 sets of large rotary kiln per year.



PFRM 型立式磨 PHRM vertical roller mill

PFRM 型立式磨是江苏鹏飞集团股份有限公司与国内大院大所密切合作,广泛吸受国外立磨先进技术,总结多年的实践经验,研究、设计、制造的一种高效、节能、环保的烘干兼粉磨设备,它集烘干、粉磨、选粉、输送为一体,具有适应性广、粉磨效率高、电耗低、磨耗小、烘干能力大、产品细度调节方便,工艺流程简单、噪音低、粉尘污染小、运行可靠、维修方便等优点。近年来,在水泥生料、煤粉制备,电厂磨煤及脱硫石粉制备,矿渣粉磨,化工行业膨润土及磷矿粉磨,冶金行业,超细粉磨行业等等许多领域,得到了非常广泛的应用。鹏飞牌 PFRM 型立磨以其质量优良、工艺技术先进、使用性能好、服务优良、赢得了越来越多的用户青睐。现我公司根据物料的不同,研发的 PFRM 型立磨,分原料磨,矿渣磨,水泥磨,煤磨,石灰石磨五大类。供客户按需选择。

PFRM vertical roller mill is a sort of drying and grinding equipment with the characteristics of high efficient, economical energy and environmental protection; it is the equipment made by Jiangsu Pengfei Group Co., Ltd, intimately cooperated with the large institute, widely absorbing the advanced technology of the foreign vertical roller mill and summarizing the years of practical experience and then the vertical roller mill is researched, designed and manufactured. It collects the drying, grinding, separating and conveying as a system. It has the advantages of wide flexibility, high grinding efficiency, low power consumption, small abrasion wear, large drying capacity, convenient adjustment of the fineness of the products, simple process flow, low noise, small dust pollution, reliable operation, convenient maintenance and so on. Recently the vertical roller mill is highly widely used in cement raw meal, coal powder preparation, grinding coal in the power plant, desulphurization stone dust preparation, slag grinding, bentonite and phosphorite grinding for chemical industry, metallurgy industry, over-fine grinding industry and other fields. For its perfect quality, advanced technology, good performance of usage, and the perfect services, "Pengfei" brand PFRM vertical roller mill has favored by the more and more users. According to different materials, our company researched and developed five different kinds of PFRM vertical mills, include raw mill, slag mill, cement mill, coal mill and limestone mill. The customers can choose suitable mills according to their requirements.



- | | |
|-----------------------------|------------------------------|
| (1) 回转喂料器 rotary feeder | (9) 热风 hot air |
| (2) 出风口 air outlet | (10) 选粉机 separator |
| (3) 旋转磨床 rotated grinder | (11) 电机 motor |
| (4) 磨辊 grinding roller | (12) 柔性联轴器 flexible coupling |
| (5) 料床 material bed | (13) 减速机 reducer |
| (6) 摇臂 rocker arm | (14) 风道 air flue |
| (7) 液压油缸 hydraulic oil tank | (15) 刮板 scraper |
| (8) 风环 vane | (16) 回料漏斗 feed back hopper |



江苏鹏飞集团股份有限公司
JIANGSU PENGFEI GROUP CO., LTD.

PFRM vertical roller mill PFRM 型原料磨

原料磨

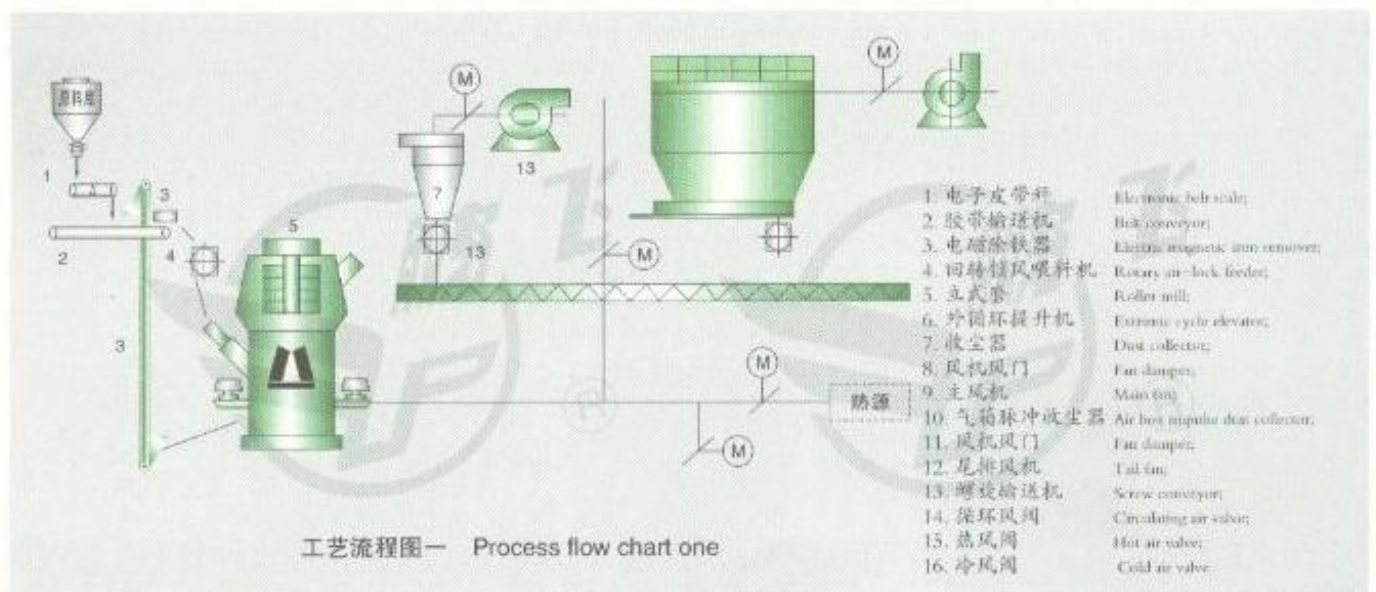
Raw Vertical Mill

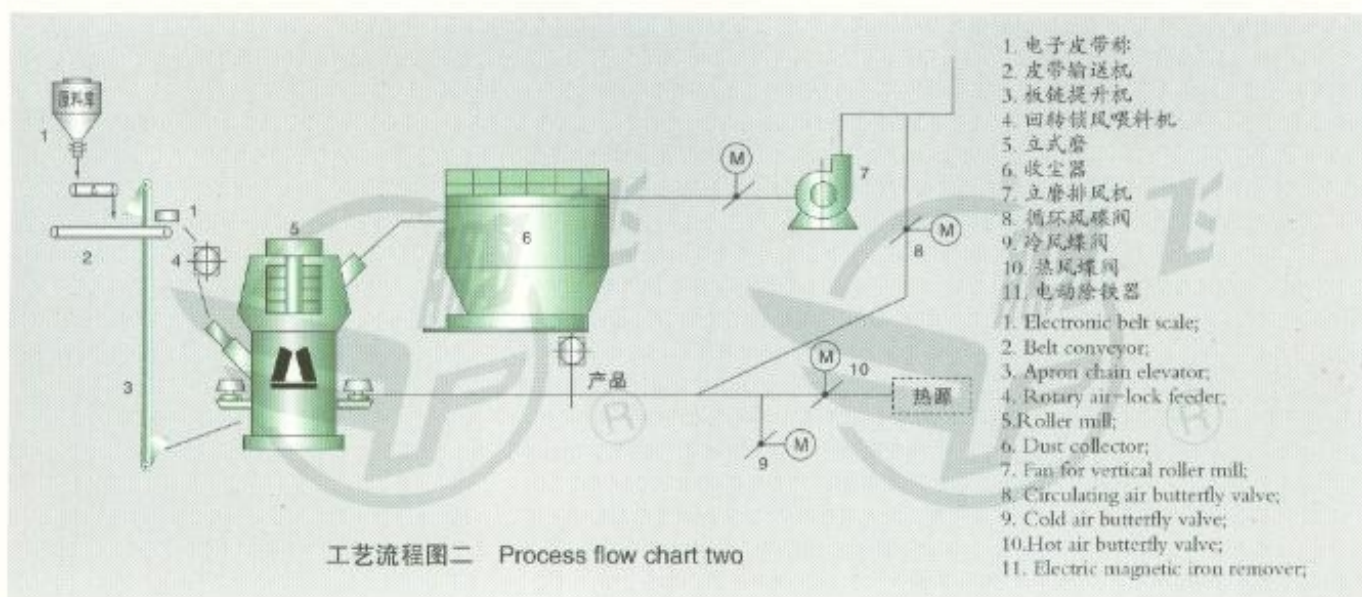
原料磨也称为生料磨，常用于水泥行业的矿石的粉磨工作。

产品特点

Product Characteristics

- ① 工艺流程简单，同时完成对物料粉磨、烘干及选粉功能；
 - ② 占地面积少、布置紧凑、系统设备重量轻、土建建设投资低；
 - ③ 粉磨效率高，电耗低；研磨部件正常使用 8000 小时以上，而且修复方便。
 - ④ 单位产品金属消耗少；辊套和磨盘衬板磨损后对产量影响小，产量降低幅度 < 5%。
 - ⑤ 每个磨辊相对独立的对磨盘上的物料进行加压粉碎，可以实行部分磨辊工作，如四辊磨机在两辊工作时产量可达额定产量的 70%。
 - ⑥ 分选部分采用动静态结合的组合适高效笼型选粉机，生料细度控制精度高，调节灵敏，生料细度 $R_{80} \mu m = 10 \sim 15\%$ ， $R_{200} \mu m = 1.0\%$ 。
 - ⑦ 烘干能力强，可利用五级预热器全部窑尾废气烘干水分 7% 的原料，如采用辅助热源可烘干水分 20% 的原料。
 - ⑧ 料床粉磨、噪音小；负压操作，粉尘污染小。
- ① Simply process, Mill, Drying and Classification at the meantime.
 - ② Less Area Occupation, Compact layout, Less Equipment Weight and Low Investment.
 - ③ High Mill Efficiency and Low Power Consumption.
 - ④ Less metal consumption per unit of product; roller and liner wearing make little effect on the yield, lower production rate less than 5%.
 - ⑤ Less wear-out. Each roller is relatively independent to make pressure and crush the materials on the millstone and it can be implemented part of the work, such as it can reach 70% of rated output when two rolls of the four-roll mill work.
 - ⑥ Separation parts combined with high dynamic and static binding cage separator, raw material fineness control high precision, sensitivity adjustment, the raw material fineness $R_{80} \mu m = 10 \sim 15\%$, $R_{200} \mu m = 1.0\%$.
 - ⑦ Drying strong, which can drying the material with 7% water by all exhaust gas from kiln exit of five degree pre-heater, and it can drying the material with 20% water in case of using the auxiliary heat source.
 - ⑧ Material bed grinding, less noise; negative pressure operation, less dust pollution.





技术参数 Technical paramter

型号 Type	磨盘直径 Dia of Table	基准装机功率 Installation Power	基准生产能力 Benchmark Capacity	最大入磨粒度 Max.Feeding Size	能力范围 Capacity Range
	(mm)	(KW)	(t/h)	(mm)	(t/h)
PFRM56.4	5600	4500	480	80	400-550
PFRM53.4	5300	4000	400	80	330-510
PFRM45.4	4500	3350	350	80	300-400
PFRM42.4	4200	2800	280	80	230-330
PFRM40.4	4000	2500	250	80	200-300
PFRM38.4	3800	2240	220	80	185-280
PFRM36.4	3600	2000	200	80	170-260
PFMR31.3	3100	1250	120	40	90-150
PFRM25.2	2500	800	75	40	60-90
PFRM17.2	1700	220	25	40	22-33
PFRM14.2	1400	150	15	40	13-20

说明：原料入磨水份 $\leq 7\%$ （正常窑尾废气可供干的水份）；成品水份 $\leq 0.5\%$ ，成品细度 $R_{80}\mu m=12\%-18\%$ ；原料易磨性指数 $TMF=0.7-1.2$ ；入磨粒度是指 95% 质量通过率的颗粒尺寸

NOTES: Feed Moisture $\leq 7\%$ (to be dried by preheater hot gas); final products moisture $\leq 0.5\%$; fineness $R_{80}\mu m=12\%-18\%$; Grindability of Raw Material $TMF=0.7-1.2$; Feed size refers to particle size of 95% throughput

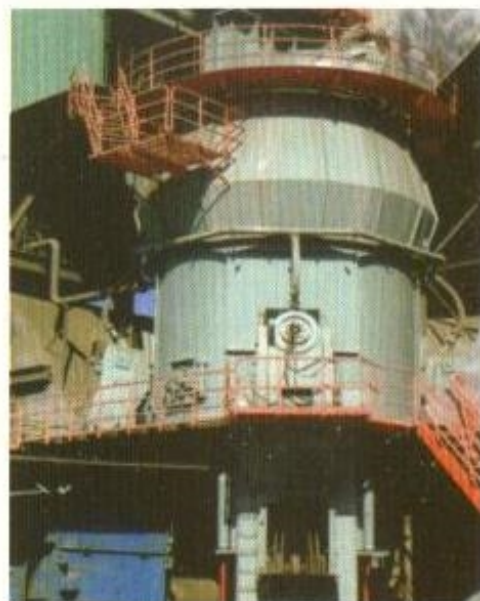


江苏鹏飞集团股份有限公司
JIANGSU PENGFEI GROUP CO., LTD.

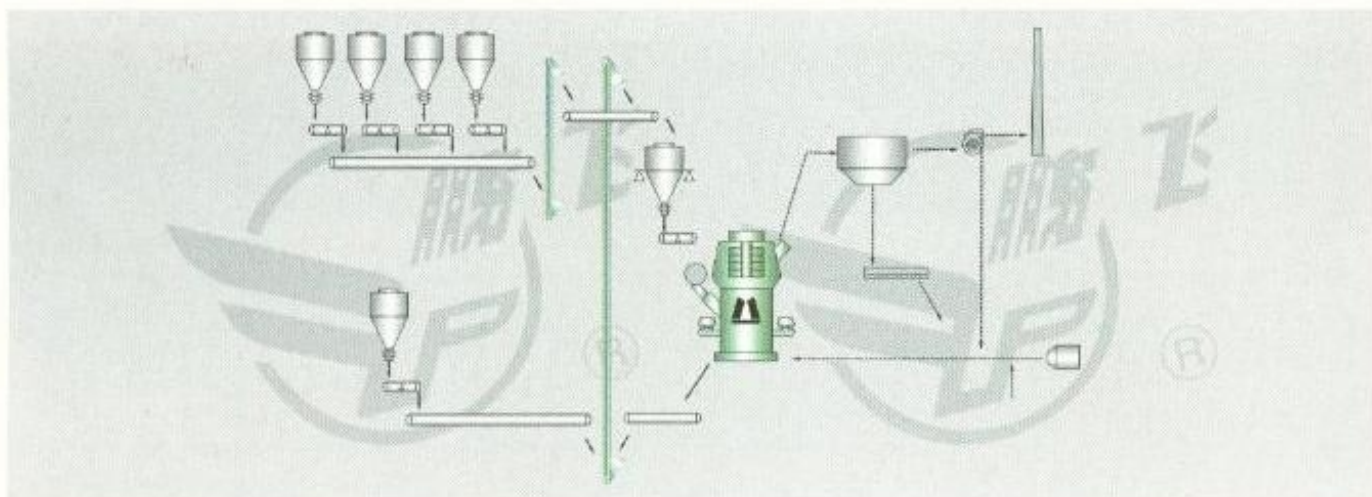
PFRMK model cement mill PFRMK 型水泥磨

PFRMK 水泥立式辊磨是由江苏鹏飞集团开发设计的新型辊磨，专门用于终粉磨水泥。该立式辊磨的磨盘衬板和磨辊辊套采用表面硬质堆焊耐磨材料，选粉机叶片采用特殊的优质耐磨板，保证设备的磨损降到最小，减少设备维护时间，提高设备运转率。采用动静态组合式高效笼型选粉机，能够保证水泥的比表面积在合理范围内调节，并保证水泥成品有适合的粒度分布。磨机通过磨内温度的控制来保证水泥中石膏的适度脱水。

PFRMK Vertical Roller Cement Mill is a new type roller mill developed and designed by Jiangsu Pengfei Group, which is specifically used for the final grinding of cement. The grinding table lining plate and the grinding roller sleeve is made by wear-resistant surfacing material, while the blades of the air separator are made of special high-quality wear-resistant plate, to minimize equipment wear and maintenance time, meanwhile to improve equipment operation rate. The high efficiency air separator of dynamic and static combined type can guarantee that the cement specific surface area will be adjusted within a reasonable range, and the finished cement products have suitable size distribution. By controlling the inner temperature, the grinding mill can ensure a proper dehydration of gypsum in cement.



工艺流程图 Process flow chart



技术参数 Technical paramter

型号 Type	磨盘直径 Dia of Table	装机功率 Installation of Power	最大入磨粒度 Max.Feeding Size	生产能力 Capacity
	(mm)	(kw)	(mm)	(t/h)
PFRMK50	5000	5300	80	200
PFRMK45	4500	4000	50	150-160
PFRMK32	3200	1600	50	55-60

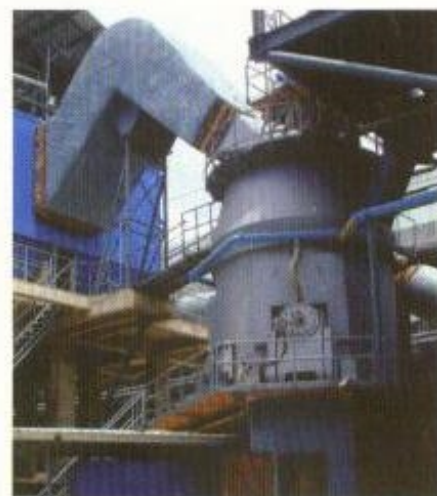
说明：允许入磨物料最大水分 $\leq 8\%$ ；成品水分 $\leq 0.1\%$ ，成品细度 $3300\text{m}^2/\text{g}$, $R_{80}\mu\text{m}\leq 1\%$, $R_{45}\mu\text{m}\leq 8\%$ 。
NOTES: Max. Feed Moisture $\leq 8\%$; Outer Moisture $\leq 0.1\%$, Fineness: $3300\text{m}^2/\text{g}$, $R_{80}\mu\text{m}\leq 1\%$, $R_{45}\mu\text{m}\leq 8\%$.

PFRMS 型矿渣磨 PFRMS slag mill

型号 Type	磨盘直径 Dia of Table	装机功率 Installation of Power	生产能力 Capacity	年产规模 Annual Capacity
	(mm)	(kw)	(Ton)	(t/h)
PFRMS50	5000	5000	135	900,000
PFRMS43	4300	3150	90	600,000
PFRMS36	3600	2500	65	400,000
PFRMS32	3200	1600	45	300,000

说明：矿渣入磨水份 $\leq 20\%$ ；入磨粒度 $\leq 10\text{mm}$ ；成品水份 $\leq 0.5\%$ ；出磨成品细度： $400\mu\text{m}/\text{g}-450\mu\text{m}/\text{g}$ ；单机电耗 $< 3\text{kWh/t}$ 。

NOTES: Feed Moisture $\leq 20\%$; Feed Size $\leq 10\text{mm}$; Outlet Moisture $\leq 0.5\%$; Fineness: $400\mu\text{m}/\text{g}-450\mu\text{m}/\text{g}$; Power Consumption of Slag Mill $< 3\text{kWh/t}$.



PFRMC coal mill PFRMC 型煤立磨



型号 Type	磨盘直径 Dia of Table	基准装机功率 Installation Power	最大入磨粒度 Max Feeding Size	生产能力 Capacity
	(mm)	(kW)	(mm)	(t/h)
PFRMC36.4	3600	1250	50	65~85
PFRMC31.3	3100	1000	50	60~70
PFRMC28.3	2800	710	50	40~50
PFRMC23.3	2300	640	50	35~45
PFRMC20.3	2000	440	40	25~35
PFRMC20.2	2000	335	40	20~25

说明：原煤入磨水份 $\leq 18\%$ ；成品水份 $\leq 1.0\%$ ；成品细度 $R_{80}\mu\text{m}=10-15\%$ （无烟煤）， $R_{80}\mu\text{m}=1-5\%$ （无烟煤）；原煤易磨性指数 HGI=45-80。

NOTES: Raw Coal Feed Moisture $\leq 18\%$; Outlet Moisture $\leq 1.0\%$; Fineness: $R_{80}\mu\text{m}=10-15\%$ (bituminous coal), $R_{80}\mu\text{m}=1-5\%$ (anthracite); Raw Coal grindability of coal inlet HGI=45-80.

PFRML 型石灰石立磨 PFRML Limestone mill

型号 Type	磨盘直径 Dia of Table	基准装机功率 Installation Power	最大入磨粒度 Max. Feeding Size	生产能力 Capacity
	(mm)	(KW)	(mm)	(t/h)
PFRML 25.2	2500	800	60	45
PFRML 22.3	2200	400	60	23
PFRML 16.3	1600	250	40	20

说明：石灰石入磨水份 $\leq 10\%$ ；成品水份 $\leq 0.5\%$ ；成品细度 $R_{45}\mu\text{m}=90\% \geq 20\%$ 。

NOTES: Limestone Feed Moisture $\leq 10\%$; Outlet Moisture $\leq 0.5\%$; Fineness: $R_{45}\mu\text{m}=90\% \geq 20\%$ 。



江苏鹏飞集团股份有限公司
JIANGSU PENGFEI GROUP CO., LTD.

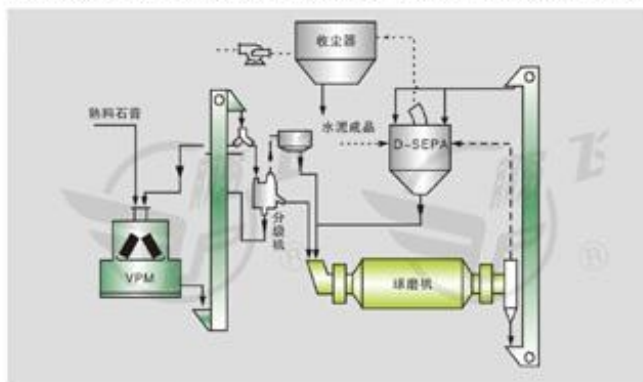
PFVPM Vertical Pregrinding Mill PFVPM 型立式预粉磨



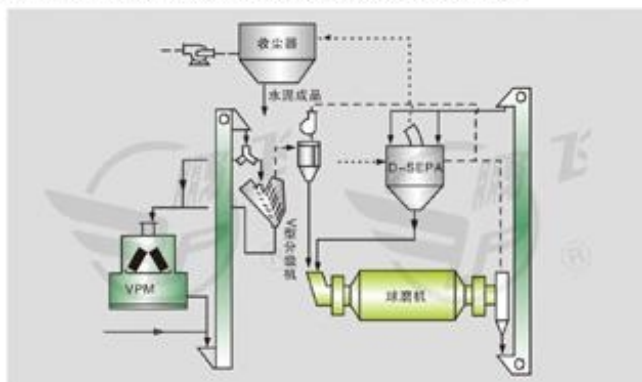
PFVPM 型预粉立磨粉磨系统是在吸收德国及日本 CK 磨、CKP 磨技术的基础上研制和开发的最新一代水泥工业专用粉磨设备，在极低的能源消耗和运行成本下，实现水泥原料和水泥产量大幅度提高。经过在广东梅县金雁水泥厂使用有如下优点：PFVPM 型预粉立磨粉磨系统内部无选粉机，减小管磨机物料粒度并大大改善易磨性；系统流程简单，运行稳定，故障率低；水泥性能、形貌特征能较好地满足水泥及混凝土性能需要；土建占地少，运行成本低；系统节电 15%~20%，产量提高 50% 以上。

PFVPM pre-grinding vertical mill system is the latest cement industrial grinding equipment designed and developed by Pengfei based on absorbing technology from CK and CKP mill of Germany and Japan. It can increase cement raw meal and cement production capacity with low energy consumption and low running cost. After operation by Guangdong Meixian Jinyan Cement plant, the system has following advantages: there is no separator in this system, this can increase grindability of materials inside tube mill. Simple system flow, stable operation, and low failure rate. Cement performance and quality can meet the requirements of cement and concrete. And it only covers less area, and low cost. It can save about 15~20% electricity and increase 50% production capacity.

operation, and low failure rate. Cement performance and quality can meet the requirements of cement and concrete. And it only covers less area, and low cost. It can save about 15~20% electricity and increase 50% production capacity.



循环分级预粉磨圈流系统
Circulating separating close-circuit pre-grinding system
(A)、FC 分级机 FC separator



V 型分级机 V separator
收尘器 Bag filter 熟料 Clinker 水泥成品 Cement finished product
石膏 Gypsum 球磨机 Ball mill 分选机 Separator

项目 Item	单位 Unit	技术参数 Technical Parameters			
型号 Model		VPM-1700	VPM-1900	VPM-2100	VPM-2400
磨盘有效直径 Effective diameter of mill disk	mm	1700	1900	2100	2400
一、用于熟料 Used for Clinker					
物料通过量 Material through-put capacity	T/h	200 ~ 230	280 ~ 320	360 ~ 410	550 ~ 610
电机能力 Capacity of motor	Kw	950	1350	1650	2200
产品粒度 (≤0.08mm) Grain size of products (≤0.08mm)		≥25%			
产品粒度 (≤2mm) Grain size of products (≤2mm)		≥85%			
二、用于水泥原料 Used for cement raw material					
物料通过量 Material through-put capacity	T/h	240 ~ 270	320 ~ 360	420 ~ 480	620 ~ 700
电机能力 Capacity of motor	Kw	800	1000	1350	1900

立磨部分业绩 Vertical mill customer list

序号 No.	工程名称 Engineering Name	规格 Specification	序号 No.	工程名称 Engineering Name	规格 Specification
1	韩国浦项KRT公司 Korea KRT company in Pohang	PFRM1700粉磨矿渣 Grinding slag	23	蒙古国KHUTUL水泥厂 Mongolia KHUTUL Cement Plant	PFRM1700原料立磨 Raw material Roller mill
2	平顶山第一特种水泥厂 The First Special Cement Plant in Pingdingshan	PFRM1300粉磨生料 Grinding of raw materials	24	梅县金源水泥厂 Meixian Jinyuan Cement Plant	PFRM1700预破碎立磨 Pregrinding Mill
3	安徽省南陵县芜湖水泥厂 Anhui province Nanling county Wunan Cement Plant	PFRM1300粉磨生料 Grinding of raw materials	25	上海富托贸易有限公司(印度的宇部) Shanghai Futuo Trading co., ltd(India Ube)	PFUM23.3立磨 Vertical mill
4	四川乐山山水建材有限公司 Sichuan Leshan Shanshui Building Materials Co., Ltd.	PFRM1300粉磨生料 Grinding of raw materials	26	韩国南方化学公司 Korea South Chemical company	PFRM1300膨润土粉磨 Bentonite powder grinding
5	包头世德南化化学材料有限公司 Baotou Shide Sud-chemie co., Ltd	PFRM1300煤立磨 Coal vertical mill	27	陕西大西沟矿业有限公司 Shanxi Daxigou mining industry company	PFRM1300磨煤 Grinding coal
6	湖北建始高坪水泥厂 Hubei Jianshi Gaoping Cement Plant	PFRM1300粉磨生料 Grinding of raw materials	28	泰州华荣建材有限公司 Taizhou Huarong Building material co., ltd	PFRM1300石粉 Rock flour
7	浙江富阳水泥厂 Zhejiang Fuyang Cement Plant	PFRM1300粉磨生料 Grinding of raw materials	29	湖北三新磷钙股份有限公司 Hubei Sanxin phosphorus calcium co., ltd	PFRM1300磷钙 Phosphorus calcium
8	新疆博乐市正大钙业有限公司 Xinjiang Bole Zhengda Calcium co., ltd	PFRM1500煤立磨 Coal vertical mill	30	中钢公司(印度) Middle steel company(India)	PFRM1300高炉喷吹磨粉 Blast furnace injection furnace
9	南京钢铁公司 Nanjing iron & Steel Company	PFRM1700磨煤 Grinding coal	31	平顶山第一特种水泥厂 Pingdingshan First special cement coppany	PFRM1300粉磨生料 Grinding of raw materials
10	沐阳县沂淮水泥有限公司 Shuyang Yihuai Cement co., Ltd	VPM2400预粉磨 Pre-grind vertical mill	32	鹤庆市科鑫矿业有限公司 Heqing Kexin mining industry company	PFRM2200S铝土砂 Alumina sand
11	江苏祥鑫环保科技有限公司 Jiangsu Xiangxin environmental science and technology ltd	PFRM2800S矿渣Slag	33	新疆博乐市正大钙业有限公司 Sinkiang Bole Zhengda calcium co., ltd	PFRM1500M磨煤 Grinding coal
12	库车汇鑫矿粉有限公司 Kuqa Huixin slag powder co., ltd	PFRM2800S矿渣Slag	34	哥伦比亚 Colombia	PFRM1500粉磨生料 Grinding of raw materials
13	襄汾县鸿达集团水泥建材有限公司 Xiangfen Hongda cement building co., ltd	PFRM2800S矿渣Slag	35	吉安惠鑫实业有限公司 Jian Huixin industrial co., Ltd	PFRM2200S立磨 Vertical mill
14	莱歇公司 Loesche company	PFLM63.3水泥立磨 Cement vertical mill	36	长乐欧高仓储有限公司 Changle Ouyan storage Co., ltd	PFRM1300石粉 Rock flour
15	南通宝钢 Nantong Baosteel	PFRM1300磨煤 Grinding coal	37	越南9-12项目 Vietnam 9-12 project	PFRM3041生料 Raw materials
16	山东招远水泥有限公司 Shandong Zhaoyuan Cement Co., Ltd.	PFRM1300生料 Raw materials	38	巨野东林水泥有限公司 Juye Dongling cement co., ltd	PFRM1700立磨 Roller Mill
17	浙江龙游水泥厂 Zhejiang Longyou Cement Plant	PFRM1300生料 Raw materials	39	包头世德南化化学材料有限公司 Baotou Shite Nanhua Chemical material co., ltd	PFRM1300磨煤 Grinding coal
18	广东海滨水泥厂 Guangdong Coastal Cement Plant	PFRM1300生料 Raw materials	40	海南昌江鸿启实业有限公司巴河水泥分公司 Hainan Changjiang Hongqi industrial co., Ltd	PFRM2200立磨 VERTICAL MILL
19	陕西府谷水泥厂 Shanxi Fugu Cement Plant	PFRM1300生料 Raw materials	41	遵义市聚源建材有限公司 Zunyi Juyuan building material co., Ltd	PFRM2800S立磨 VERTICAL MILL
20	上海富托贸易有限公司(印度宇部) Shanghai Futuo Trading Co., Ltd. (India Ube)	PFRM3800立式磨配件 Roller mill parts	42	扬州一川镍业有限公司 Yangzhou Yichuan Nickel co., ltd	PFRM1300磨煤 Grinding coal
21	南京圣火水泥新技术工程有限公司 (贵州鑫源煤化工有限公司) Nanjing Flame Cement New Technology Engineering Co., Ltd. (Guizhou Xinyuan Coal Chemical Industry Co., Ltd.)	PFRM3800磨煤立磨 Raw coal Roller mill	43	攀钢集团 Pangang Group	PFRM1300磨煤 Grinding coal
22	梅县梅雁旋窑水泥有限公司 Mei County Melyan Rotary kiln Cement Co., Ltd.	PFRM3841原料立式磨机 Raw material Roller mill	44	山东东昊实业有限公司 Shandong Donghao Industry Co., Ltd	PFRM1300熟石灰 Active lime



江苏鹏飞集团股份有限公司
JIANGSU PENGFEI GROUP CO., LTD.

Roller Mill Press Production 立式磨生产现场



大型加工设备 Large processing equipment



大型数控落地镗床
Large numerical control floor type boring machine



CK61200DX6000数控卧式车床
CK61200DX6000 numerical control horizontal lathe



Φ13m 立式车床
Φ13m Vertical Lathe



数控切割机
Numerical Control Cutting Machine



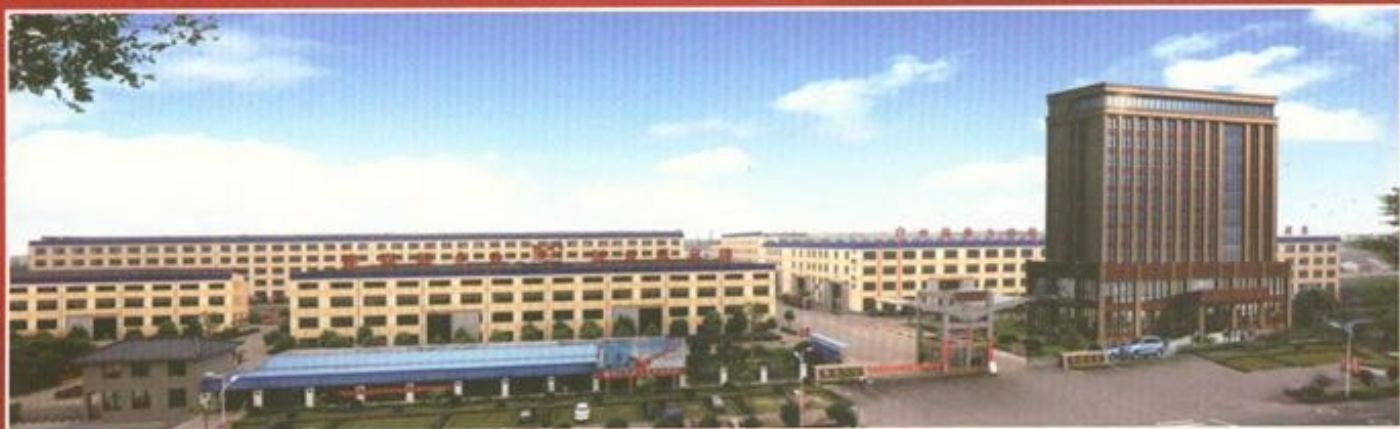
φ 12.0 米滚齿机 (俄罗斯产)
φ 12.0m Hobbing Machine (Made in Russia)



大型钻床
Large drilling machine



江苏鹏飞集团股份有限公司
JIANGSU PENGFEI GROUP CO., LTD.



地址：中国·江苏海安县城北郊资家集（二〇四国道东侧）
 电话：0513-88755311 88755027
 传真：0513-88755315
 邮编：226623
 E-mail: pf@pengfei.com.cn
 Http://www.PENGFEI.com.cn
 Add: Benjiaji, North Suburbs of Hai'an County
 Jiangsu Province, P.R. of China
 Tel: 0513-88755311 88755027
 Fax: 0513-88755315
 P.C.: 226623

本产品样本技术参数仅供参考，签订合同时技术参数以蓝图为准。
 The technical parameter here is only for reference, final technical parameter
 is subjected to blue drawing which signing contract.